



Benita Snyman
084 548 3941
benita.snyman@homeandhectare.com



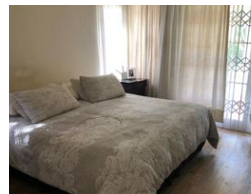
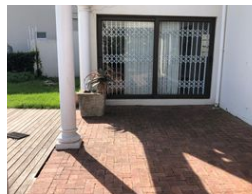
Wendy Baker
0837616170
wendy.baker@homeandhectare.com

Contact Home and Hectare
Eastern Cape

041 5811744

43B - 6th Avenue
Walmer
Port Elizabeth
6070

3 Bedroom House To Let in Port Elizabeth Central



R18,000 pm

Lease Period 12 months

Annual Escalation -

Lease Excludes:
Water & Electricity

Availability 01 Jul 2025

Deposit R36,000

3 2.5 3

Secure and Central - Generous Family Home Off Hallack Drive

Enjoy suburban peace and quiet while still being near to the city's buzz with this well-proportioned property located a stone's throw from St George's Park. Tucked away in a quiet cul-de-sac, the home offers the following:

- Master bedroom with dressing room and en-suite bathroom
- 2 additional bedrooms with built-in cupboards
- Full family bathroom
- Large living and indoor entertainment areas
- Kitchen with scullery
- Upstairs study/lounge
- Established garden

Features

Interior

Bedrooms	3
Bathrooms	2.5
Kitchens	1
Recep. Rooms	3
Studies	1
Furnished	No

Exterior

Garages	3
Carports / Parkings	2
Security	No
Dom. Accom.	1
Pool	Yes
Views	False

