



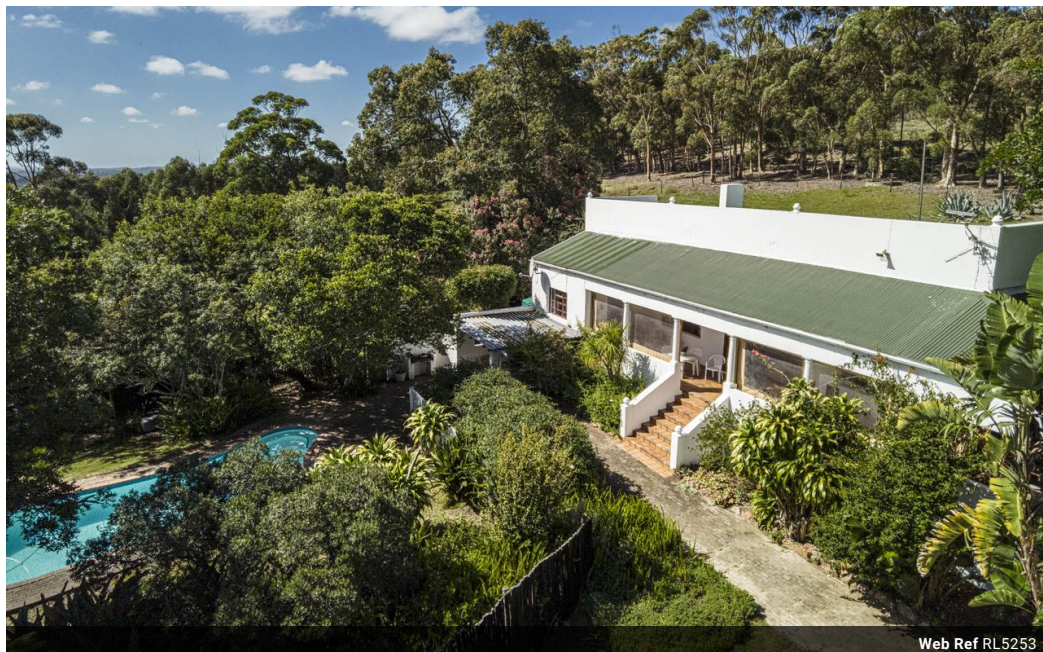
Walter Fisher
082 926 1376
walter.fisher@homeandhectare.com

Contact Home and Hectare
Eastern Cape

041 5811744

43B - 6th Avenue
Walmer
Port Elizabeth
6070

Farm For Sale in Uitenhage Rural



Web Ref RL5253



R5,500,000

3 2 2

Monthly Bond Repayment R55,837.59

Calculated over 20 years at 10.75% with no deposit.

Transfer Costs R462,807.00 **Bond Costs** R65,785.00

These calculations are only a guide. Please ask your conveyancer for exact calculations.

100 HA Farm Lady Slipper

What an opportunity to acquire this lovely 100ha North facing Lady Slipper farm at the very saleable price of R5,500.000 all inclusive.

Previously a flower farm specialising in proteas it has now just been used as a leisure retreat. Located 500 mtrs off the R102 and 15kilometers from Uitenhage and the Bay West Mall the 1km blue gum lined driveway leads you to this manicured homestead on plus minus 1ha of lawns, garden, and orchid with electrical fencing. The farm is not being sold as a going concern. It is CC owned which is VAT registered.

The CC can be taken over with change of membership and the VAT registration .

A family residence deluxe consisting of yester year size rooms and features.

The main house with its gleaming wooden floors and enormous front veranda invites you into a home of warmth and character. ...

Features

Pets Allowed Yes

Interior

Bedrooms 3
Bathrooms 2
Kitchens 1
Recep. Rooms 2
Studies 1
Furnished Yes

Exterior

Garages 2
Carports / Parkings 5
Security Yes
Dom. Accom. 1
Pool Yes
Views False

Extras

Pets Allowed

