



John Suntele
072 831 2588
john.suntele@homeandhectare.com



Rochell Suntele
072 831 2588
rochell.suntele@homeandhectare.com

Contact Home and Hectare
Western Cape

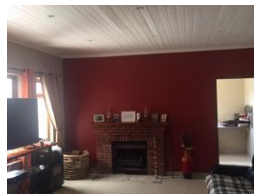
041 581 1744

43b 6th Avenue
Walmer
Port Elizabeth

4 Bedroom House For Sale in Parkersdorp



Web Ref RL5435



R1,890,000

4 1.5 4

Monthly Bond Repayment R19,187.83

Calculated over 20 years at 10.75% with no deposit.

Transfer Costs R68,606.00 **Bond Costs** R32,760.00

These calculations are only a guide. Please ask your conveyancer for exact calculations.

CHARMING FAMILY HOME

This property is nestled in the well- established area of Parkers Dorp, Saldanha.

This is old meets new, newly renovated (partially) property offers tremendous opportunities!

With 4 bedrooms, study or office space, full family bathroom, en-suite in the main bedroom, spacious fitted kitchen with scullery and laundry area, dining room, living room, sun room, outside braai room it offers guest house potential.

Lots of built-in cupboards throughout the house, tiled and sunny rooms.

The charming fireplace in the living room provides cozy winter tranquility, while the Sunroom is there to relish leisurely afternoons.

A separate entrance single room with en-suite offers extra rental income.

The double volume garages with big store room can be converted into flats - plans included.

The size of the land is big, a pool can be built...

Features

Pets Allowed		Yes			
Interior		Exterior		Sizes	
Bedrooms	4	Garages	4	Land Size	1,088m²
Bathrooms	1.5	Carports / Parkings	5		
Kitchens	1	Security	Yes		
Recep. Rooms	2	Pool	No		
Studies	1	Views	False		
Furnished	No				

Extras

Built-in Wardrobes Covered Parking Pets Allowed Study Walk-in Closet Barbecue Area Pantry
Fireplace Hob Laundry Tiled Floors Under Counter Oven Washing Machine Connection Wood
Ceil

