



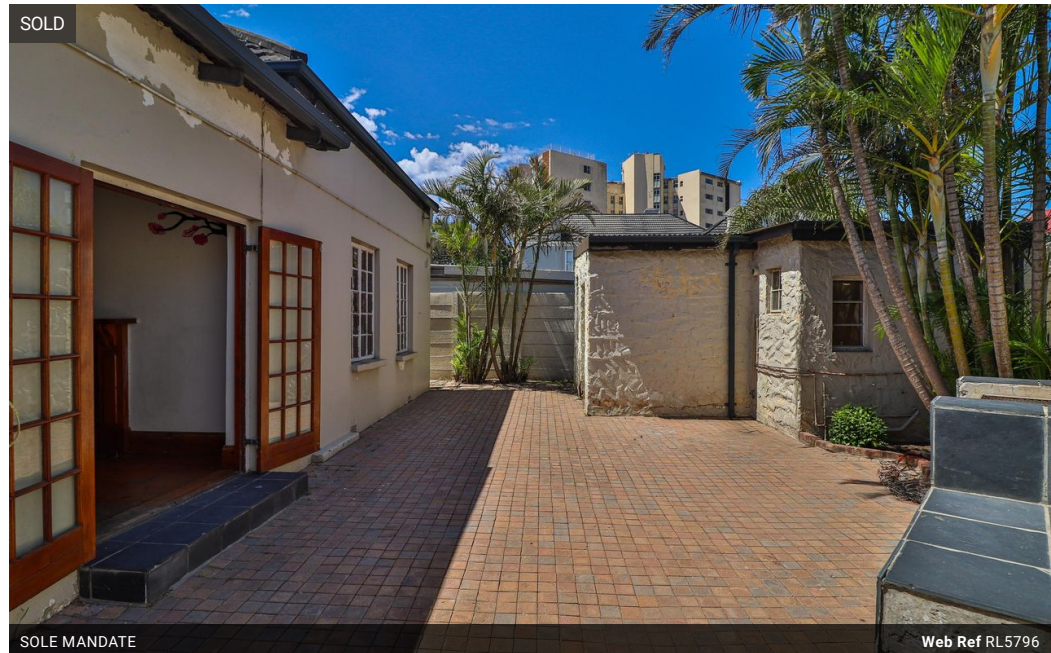
Gail Botha
082 337 7454
gail.botha@homeandhectare.com

Contact Home and Hectare
Eastern Cape

041 5811744

43B - 6th Avenue
Walmer
Port Elizabeth
6070

2 Bedroom House Sold in St Georges Park



R850,000

Monthly Bond Repayment R8,629.45

Calculated over 20 years at 10.75% with no deposit.

Transfer Costs R28,244.00 **Bond Costs** R21,450.00

These calculations are only a guide. Please ask your conveyancer for exact calculations.

 2  1

Popular St Georges area

Endless Potential Awaits - A Home Ready for Transformation!

This charming property is brimming with possibilities, making it an excellent opportunity for renovators and property investors!

Ideally situated close to top schools - Grey Junior & High School (walking distance), St Georges Prep, Clarendon Park and Greenwood Primary School.

The main house features:

Two spacious bedrooms

One bathroom with a toilet, basin, and bath

A generous lounge with a cozy fireplace

A kitchen waiting for your personal touch

Additionally, the property includes a separate outside bedroom with its own shower, basin, and toilet-perfect for extra living space or rental income.

Enjoy outdoor gatherings in the dedicated braai area, offering plenty of room for entertainment.

Features

Pets Allowed Yes

Interior

Bedrooms	2
Bathrooms	1
Kitchens	1
Recep. Rooms	2
Furnished	No

Exterior

Security	Yes
Pool	No
Views	False

Sizes

Floor Size	174m ²
Land Size	261m ²

