



Sam Sethosa
0791956122
sam.sethosa@homeandhectare.com

Contact Home and Hectare
Eastern Cape

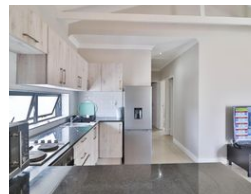
041 5811744

43B - 6th Avenue
Walmer
Port Elizabeth
6070

2 Bedroom Townhouse For Sale in Parsonsvei



Web Ref RL5161



R850,000

2 1

Monthly Bond Repayment R8,629.45

Calculated over 20 years at 10.75% with no deposit.

Transfer Costs R28,244.00 **Bond Costs** R21,450.00

These calculations are only a guide. Please ask your conveyancer for exact calculations.

Monthly Rates R724.8

Lovely Townhouse - Fourleaf Estate

An inviting intimate home where open plan living and contemporary design harmoniously blend. The tiled living room offers a versatile space that's perfect for family gatherings and entertaining. The modern kitchen boasts top-of-the-line appliances, including a built-in oven, making cooking a pleasure. The two bedrooms provide ample room for relaxation and rest. Each room is thoughtfully designed with ample natural light and built-in storage. Enjoy the convenience of two stylish bathroom, with modern fixtures and finishes. Whether it's a quick morning routine or a relaxing bath, you'll find comfort in every corner. Step outside into your private outdoor space, where you can bask in the fresh air and enjoy your own built-in braai area. This is the perfect place to host barbecues, unwind after a long day, or simply savor the...

Features

Interior

Bedrooms	2
Bathrooms	1
Kitchens	1
Recep. Rooms	2
Furnished	No

Exterior

Carports / Parkings	1
Security	No
Pool	No
Views	False

