



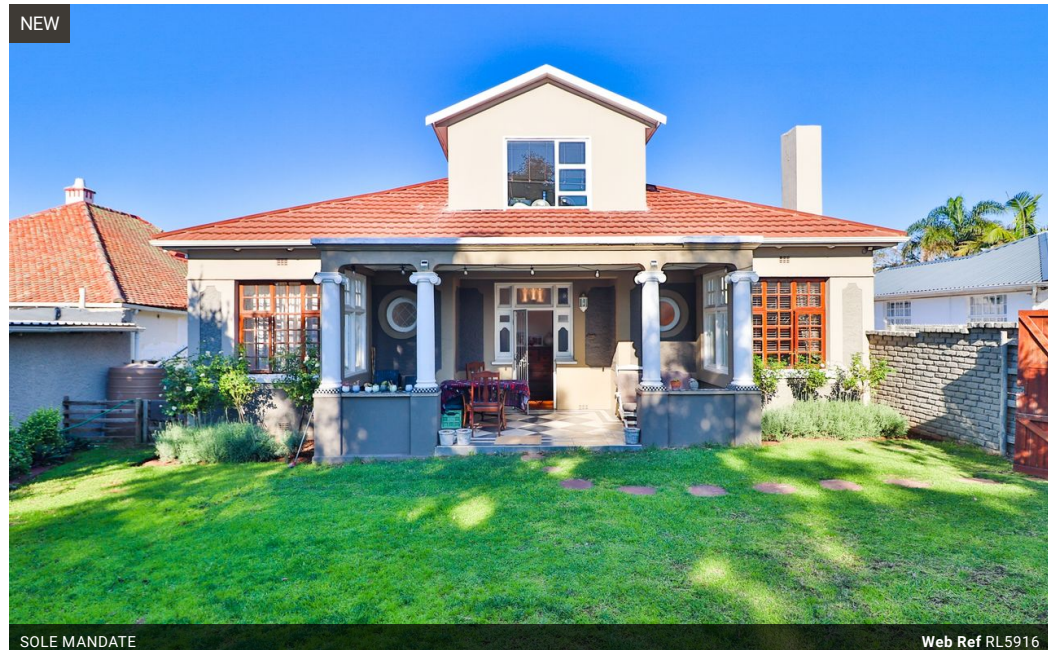
**Gail Botha**  
082 337 7454  
gail.botha@homeandhectare.com

Contact Home and Hectare  
Eastern Cape

041 5811744

43B - 6th Avenue  
Walmer  
Port Elizabeth  
6070

## 3 Bedroom House For Sale in Mill Park



SOLE MANDATE

Web Ref RL5916



**R3,150,000**

3 3 1

**Monthly Bond Repayment** R32,513.93

Calculated over 20 years at 11% with no deposit.

**Transfer Costs** R178,879.00 **Bond Costs** R44,070.00

These calculations are only a guide. Please ask your conveyancer for exact calculations.

**Monthly Rates** R2,612

### Mill Park Family Home with Income-Generating Cottage

SOLE MANDATE

Location:

Central Mill Park, five minutes from Grey High School, Collegiate Girls', Greenacres Hospital, St George's Hospital and multiple shopping centres.

Main House:

3 bedrooms, 2 en-suite

One en-suite bedroom upstairs

Two bedrooms (one en-suite) downstairs

Open-plan lounge, dining area and kitchen

Outbuildings:

Separate laundry

Large Wendy house / storage room

Parking:

Single garage

### Features

Pets Allowed		Yes			
Interior				Sizes	
Bedrooms	3			Land Size	714m <sup>2</sup>
Bathrooms	3				
Kitchens	1				
Recep. Rooms	2				
Furnished	No				
Exterior					
Garages	1				
Carports / Parkings	3				
Security	Yes				
Pool	No				
Views	False				