



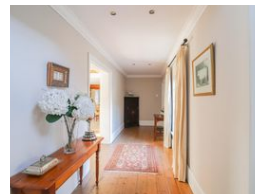
Mandy Akom
0825519048
mandy.akom@homeandhectare.com

Contact Home and Hectare
Eastern Cape

041 5811744

43B - 6th Avenue
Walmer
Port Elizabeth
6070

46,000m² Small Holding Sold in Lovemore Park



R9,500,000

🛏 4 🛁 4.5 🚗 3

Monthly Bond Repayment R96,446.75

Calculated over 20 years at 10.75% with no deposit.

Transfer Costs R925,676.00 **Bond Costs** R84,785.00

These calculations are only a guide. Please ask your conveyancer for exact calculations.

Monthly Rates R4,863

English Country Style Home

A video not to be missed!!!

Luxury, elegance and tranquility are just a few words to describe this beautiful English country style home. It is set on 4.6 hectares of land with beautifully manicured gardens and paddocks in a quiet setting, with an abundance of bird life.

As you enter the property you drive along a tree lined driveway that takes you to the majestic main house. The entrance is beautiful and warm with wooden floors throughout downstairs. To the left of the entrance hall, you enter a large open plan lounge and dining room with a beautiful fireplace, overlooking the pool and well-established garden area.

To the right of the entrance hall, you are taken into a magnificent farm style kitchen with a seating area and a scullery, this also opens onto a patio where you can enjoy breakfast at the pool. There is a...

Features

Pets Allowed Yes

Interior

Bedrooms	4
Bathrooms	4.5
Kitchens	1
Recep. Rooms	3
Studies	1

Exterior

Garages	3
Dom. Accom.	1
Pool	Yes

Sizes

Land Size	46,000m ²
-----------	----------------------

Extras

Built-in Kitchen Appliances Covered Parking Study Walk-in Closet Pantry Alarm System
Borehole Laundry Carport for 2 Vehicles Parking for 5 Vehicles

