



Cynthia Arkeldien
073 454 7913
cynthia.arkeldien@homeandhectare.co.za

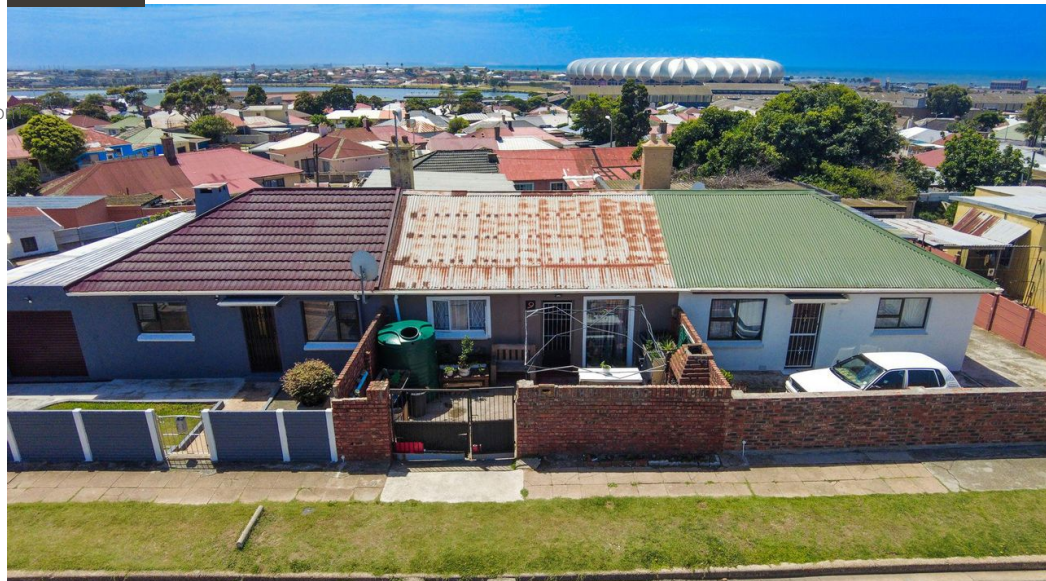
Contact Home and Hectare
Eastern Cape

041 5811744

43B - 6th Avenue
Walmer
Port Elizabeth
6070

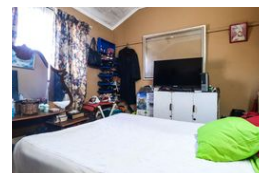
2 Bedroom House For Sale in Kensington

UNDER OFFER



SOLE MANDATE

Web Ref RL5823



R420,000

2 1

Monthly Bond Repayment R4,263.96

Calculated over 20 years at 10.75% with no deposit.

Transfer Costs R17,928.00 **Bond Costs** R12,935.00

These calculations are only a guide. Please ask your conveyancer for exact calculations.

Monthly Rates R400

Diamond in the rough

In a quiet street, this 2-bedroom home is the perfect starter property or investment opportunity for those looking to add their personal touch. Featuring a kitchen, bathroom, and parking for one car, this home has great bones and endless possibilities with some TLC.

Located in a sought-after area, it offers easy access to the N2 and is conveniently close to major employers like Aspen Pharmacare and Mondelez. Families will love the proximity to top-rated schools, including Collegiate and Andrew Rabie High, making it a fantastic choice for young professionals, small families, or investors looking for rental potential.

If you're ready to turn a hidden gem into a dream home, this one is for you!

Viewings by appointment only, don't miss the video tour!

Every effort has been made to make sure the content of this advert is...

Features

Pets Allowed		Yes			
Interior				Exterior	
Bedrooms	2			Carports / Parkings	1
Bathrooms	1			Security	No
Recep. Rooms	1			Pool	No
Furnished	No			Views	False
				Sizes	
				Land Size	201m ²

