



Walter Fisher
082 926 1376
walter.fisher@homeandhectare.com

Contact Home and Hectare
Eastern Cape

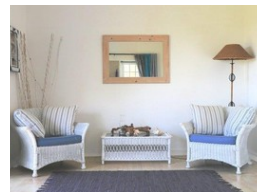
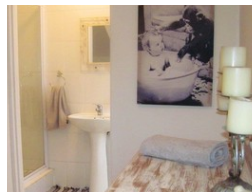
041 5811744

43B - 6th Avenue
Walmer
Port Elizabeth
6070

18,900Ha Farm For Sale in Chelsea



Web Ref RL2407



R6,500,000

🛏 7 🚿 5 🏠 2

Monthly Bond Repayment R65,989.88

Calculated over 20 years at 10.75% with no deposit.

Transfer Costs R578,766.00 **Bond Costs** R70,535.00

These calculations are only a guide. Please ask your conveyancer for exact calculations.

Country Air B&B Close to Town

Ideally located within the Chelsea Conservancy this captivating property offers potential owners an excellent opportunity to reap a share of the rewards from Port Elizabeth's ever growing tourism industry.

Sold as a going concern, with existing listings on top accommodation websites, the property is currently fully utilised as an AIR B&B and features a main dwelling divided into 3 apartments as well as 2 additional cottages, an outdoor kitchen, braai facilities, large double garage and outside bathroom. With no major structural changes made during the conversion to a guesthouse, the main dwelling can easily be returned to its original form as a large family home featuring 4 bedrooms, 2 bathrooms, spacious living areas and farmstyle kitchen while the 2 cottages could be retained as income-generating accommodation.

The...

Features

Pets Allowed		Yes			
Interior				Exterior	
Bedrooms	7			Garages	2
Bathrooms	5			Dom. Accom.	1
Kitchens	1			Pool	No
Recep. Rooms	2				
				Sizes	
				Land Size	18,900Ha

