



**Gerrit van Heerden**  
083 658 7474  
gerrit.vanheerden@homeandhectare.com

Contact Home and Hectare  
Western Cape

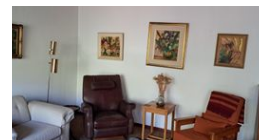
041 581 1744

43b 6th Avenue  
Walmer  
Port Elizabeth

13Ha Farm For Sale in Tierfontein AH



Web Ref RL5817



**R6,950,000**

3 2 4

**Monthly Bond Repayment** R70,558.41

Calculated over 20 years at 10.75% with no deposit.

**Transfer Costs** R628,266.00 **Bond Costs** R70,535.00

These calculations are only a guide. Please ask your conveyancer for exact calculations.

## SMALL HOLDING FOR SALE

This 13,6 ha property occupies an attractive rural position in the Tierfontein area outside Malmesbury towards Cape Town. It sits in the heart of tranquil countryside and is slightly sloped with views across the picturesque landscape.

Farming activities consist of the production of wine grapes and tomatoes, all under irrigation.

There are 4 ha Shiraz (planted 2000/01) and 2 ha Mourvedre (planted 2002) for which each cultivar delivers a yield of approximately 15 tons of grapes per annum. Grapes are purchased by 2 prestigious wine brand entities who pay above average prices for this property's high quality.

Tomatoes are produced in 18 tunnels (covering 4 000 square meters) and deliver a total harvest of 60 to 70 tons from 2 harvesting periods per year.

Water for domestic use and irrigation comes from 2 boreholes...

## Features

Pets Allowed		Yes			
Interior				Exterior	
Bedrooms	3			Garages	4
Bathrooms	2			Carports / Parkings	2
Recep. Rooms	2			Security	No
Studies	1			Pool	Yes
Furnished	No			Views	False
				Sizes	
				Land Size	13Ha

