



Gerrit van Heerden
083 658 7474
gerrit.vanheerden@homeandhectare.com

Contact Home and Hectare
Western Cape

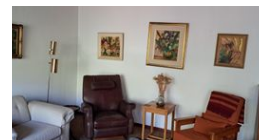
041 581 1744

43b 6th Avenue
Walmer
Port Elizabeth

13Ha Farm For Sale in Malmesbury Rural



Web Ref RL5817



R5,950,000

3 2 4

Monthly Bond Repayment R60,406.12

Calculated over 20 years at 10.75% with no deposit.

Transfer Costs R512,307.00 **Bond Costs** R65,785.00

These calculations are only a guide. Please ask your conveyancer for exact calculations.

SMALL HOLDING FOR SALE

This 13,6 ha property occupies an attractive rural position on Hillcrest Road outside Malmesbury towards Cape Town. It sits in the heart of tranquil countryside and is slightly sloped with views across the picturesque landscape.

Farming activities consist of the production of wine grapes and tomatoes, all under irrigation.

There are 4 ha Shiraz (planted 2000/01) and 2 ha Mourvedre (planted 2002) for which each cultivar delivers a yield of approximately 15 tons of grapes per annum. Grapes are purchased by 2 prestigious wine brand entities who pay above average prices for this property's high quality.

Tomatoes are produced in 18 tunnels (covering 4 000 square meters) and deliver a total harvest of 60 to 70 tons from 2 harvesting periods per year.

Water for domestic use and irrigation comes from 2 boreholes with a delivery...

Features

Pets Allowed Yes

Interior

Bedrooms	3
Bathrooms	2
Recep. Rooms	2
Studies	1
Furnished	No

Exterior

Garages	4
Carports / Parkings	2
Security	No
Pool	Yes
Views	False

Sizes

Land Size	13Ha
-----------	------

