



**Benita Snyman**  
084 548 3941  
benita.snyman@homeandhectare.com



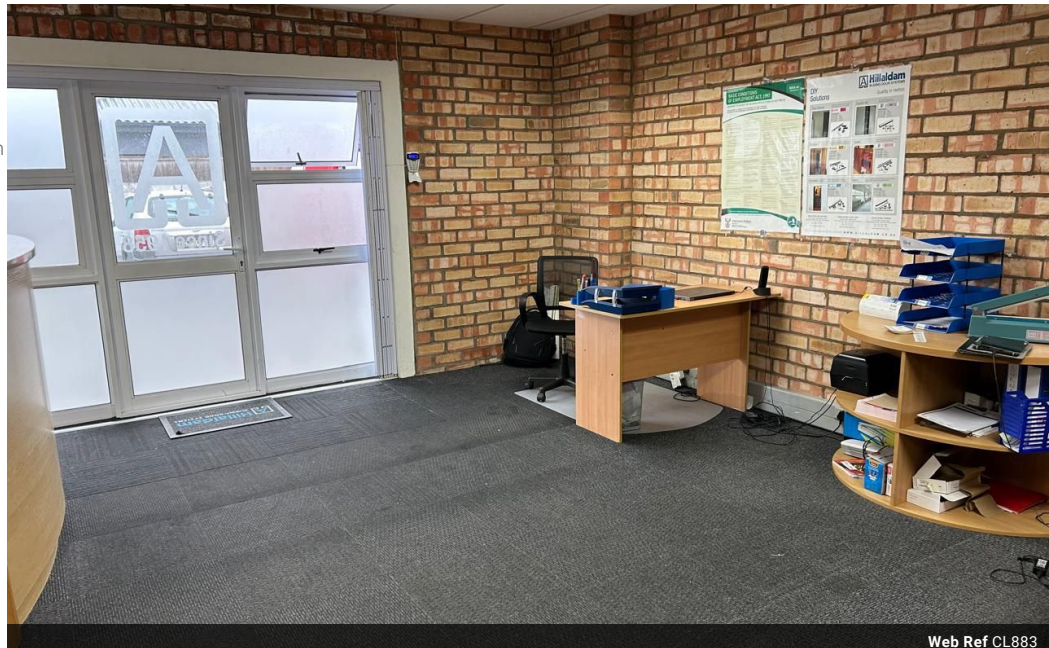
**Wendy Baker**  
0837616170  
wendy.baker@homeandhectare.com

Contact Home and Hectare  
Eastern Cape

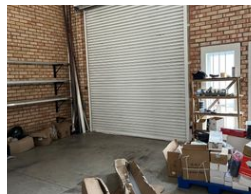
041 5811744

43B - 6th Avenue  
Walmer  
Port Elizabeth  
6070

372m<sup>2</sup> Warehouse To Let in Newton Park



Web Ref CL883



**R85 per m<sup>2</sup>**

**Gross Monthly Rental** R31,620 Excl. VAT

0 0

## Commercial Property to Let in Newton Park

Located in the heart of Newton Park, one of Port Elizabeth's most sought-after business suburbs, this versatile commercial property offers an ideal solution for businesses in need of both storage and office space.

Including office space & storage for R85/m<sup>2</sup> (Excl. VAT)

Property Features:

- 300m<sup>2</sup> Storage Space: Spacious and functional area, perfect for stock storage and light industrial use.
- 72m<sup>2</sup> Office Space: Neatly carpeted and well-maintained, providing a comfortable workspace.
- Large Roll-Up Door: Facilitates easy access for loading and unloading of goods.
- Off-Street Parking: Convenient and secure parking available for staff and clients.
- Prime Location: Close to major transport routes, amenities, and commercial hubs.

## Features

**Zoning** Commercial

**Interior**

Power 3 Phase Yes

**Sizes**

Floor Size 372m<sup>2</sup>

