

 Welkom in   
**KOEKENAAP**

**Koekenaap is situated in the Lower Olifants River Valley, between the Atlantic Ocean on the West Coast and the Olifants River inland. It is a modest three-hour drive from Cape Town and about 25km from the snoek and crayfish-filled West Coast waters.**

**Koekenaap is set in a patchwork landscape of farming units. Farmers produce grapes, tomatoes, beans, potatoes, beetroot, pumpkin and a variety of fruit.**



Erven



1430

1431

1432

**KOEKENAAP  
ERF 1430 &  
1431**

---

**Location:**

**Behind community hall**

---

**Extent- Erf 1430 & 1431-1200m<sup>2</sup> each**

---

**Current use – Undeveloped**

---

**Zoning (use right) - Institutional zone II**

---

**Primary use: House of worship (*kerk*)**

---

**Consent uses** (with prior approval):

**Parsonage (pastorie) /**

**Place of assembly (vergaderplek)**

---



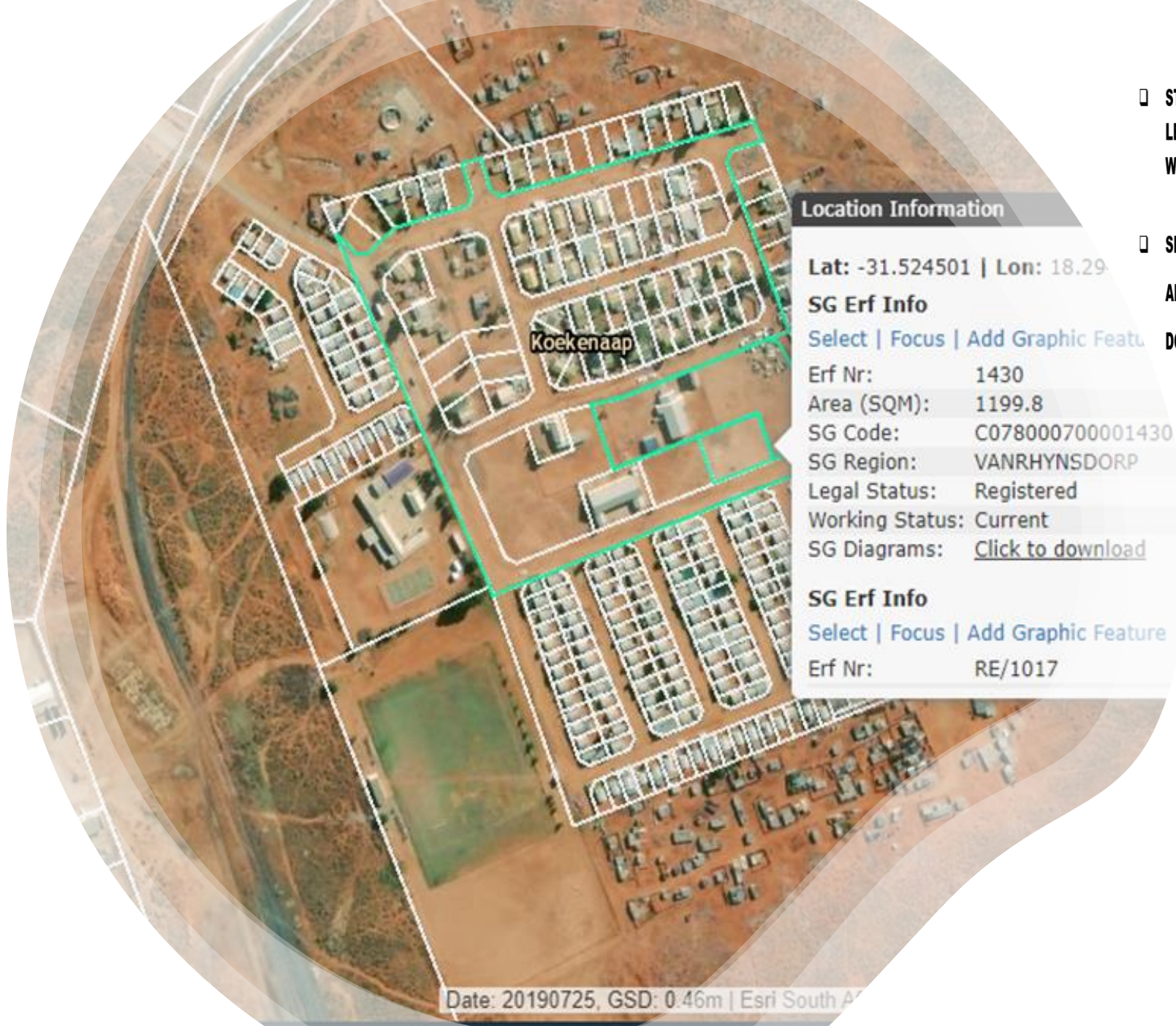
**NEED TO  
KNOW  
REGARDING  
THIS  
PROPERTY**

**INSTITUTIONAL ZONE II**

**“House of prayer means a church, synagogue, mosque, temple, chapel or other place of worship and includes any building in connection there-with, but does not include a funeral home, including a chapel that is part of such a venue.”**

- Bulk services available**
- Fees payable to connect services: As approved in tariff schedule**
- Registration cost, etc. for the account of successful bidder**

- ❑ If the information contained herein differs from relevant legislation, the latter will apply.
- ❑ Data included are according to available information on date of compilation of this presentation.



- ❑ STUDIES AND APPLICATIONS IN TERMS OF LEGISLATION IS THE RESPONSIBILITY OF (AND WILL HAVE TO BE DONE BY) THE DEVELOPER
- ❑ SELLING THIS PROPERTY BY THE MUNICIPALITY AND SUBMISSION OF DEVELOPMENT APPLICATIONS DO NOT GRANT OR REMOVE ANY RIGHTS